

IN THIS ISSUE:

Announcements

1. [News](#)
2. [Events](#)
3. [MicroStation tip](#)
4. [InRoads tip](#)
5. [Open enrollment classes](#)
6. [On-site training](#)

The integrator Symmetry Systems of New York has been acquired by Bentley Systems, Inc. We wish Tom and his superb staff all the best!

We are one of the few remaining independent suppliers of MicroStation and InRoads expertise. If you desire another option or alternative assessment for your needs, do not hesitate to contact us for a free consultation.

News - [top](#)

Spread the Word

Spread the word. Pass this newsletter on to a friend. If a friend forwarded this issue to you, [sign up for your own copy](#).

We are still here! We were experiencing technical difficulties last week with our website and email server. Everything is back up and running smoothly today. Please try contacting us again if you sent us an email and it did not make it. We would like to hear from our readers.

Events - [top](#)

[Click here for past issues.](#)

Quick Links

Bentley:

- [Contact us](#)
- [Visit our web site](#)
- [Bentley 2004 InRoads User Training Conference](#) - Oct. 25-28 - Scottsdale, AZ
- [Bentley 2004 GeoPak User Training Conference](#) - Dec. 13-15 - Ft. Lauderdale, FL

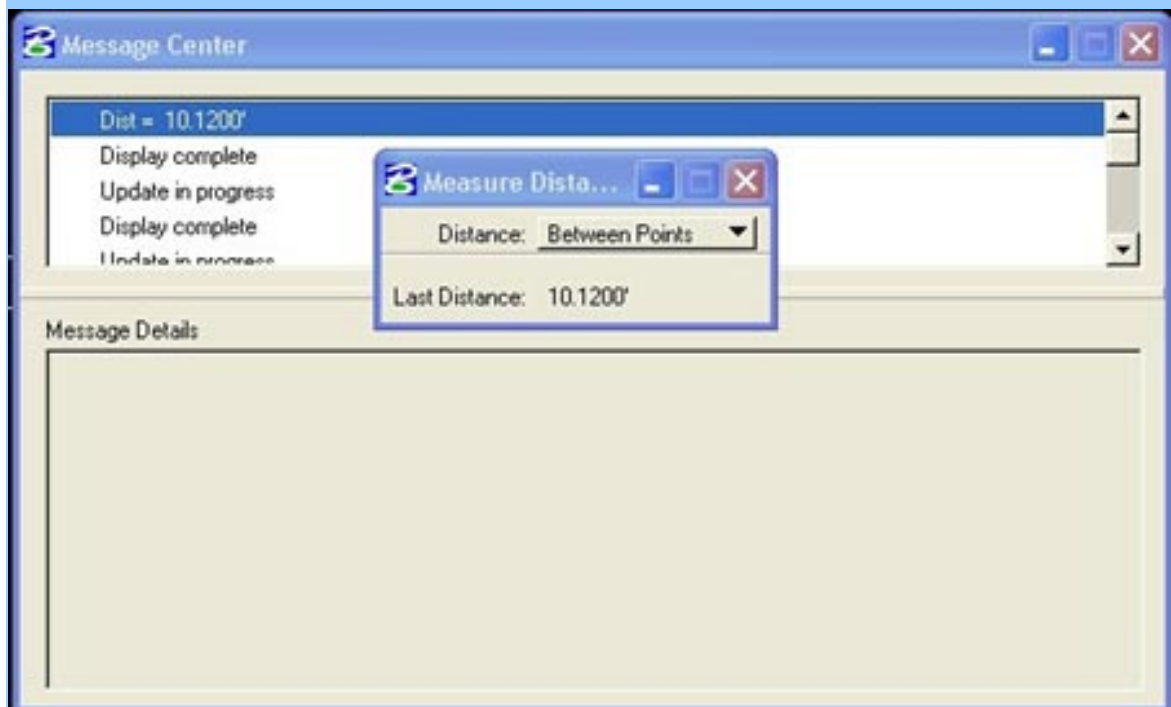
Others:

- [Joint Services Environmental Management Conference](#)
August 16-19 San Antonio, TX
- [The Mid-Continent MicroStation Community](#)
September 1-2 at the Overland Park Convention Center
- [Iowa DD&E Apps Group Fall Conference, Bentley FORUM](#)
October 6-7 - Ames, IA
- [TMC of St. Louis Forum, Bentley FORUM](#)
October 18-19 at Harrah's Casino
- [NAMUG - North American MX User Group](#)
Sept. 16-17 - Indianapolis, Indiana

Measuring a Horizontal Distance

To ensure when measuring a distance in a 3D file it will be a horizontal distance and not a slope distance you need to turn on your depth lock before you measure the line. Using the distance method Between Points the readout will then be a horizontal distance. The other distance methods do not have the same effect.

For you MicroStation V8 users you can now copy the distance from the Message Center or from the Tool Settings Dialog box. Use Ctrl+C to copy it to the clipboard then use Ctrl+V to paste it into MicroStation.



Sorry V7 users. Keep the paper and pencil handy for getting the measurement recorded.

Need to make edits to InRoads surfaces represented in cross sections? Would you like to make precise edits based on parameters such as distance, grade, and position? Are you using MicroStation to make those edits? A better way exists.

Under the InRoads menu, Tools>Application Add-Ins, toggle on the 'Edit Cross Section Add-In' application. This will add to your menu "Evaluation>Cross Sections>Edit Cross Section".

Select a cross section set, cross section, and surface for modification. The dialog operates much like the template segment editor. By default the left segment will be active (highlighted). Selecting the 'left' or 'right' buttons will navigate across the surface. Toggle on either 'Global' or 'Local' to identify the segments that will be impacted by a change. Entering data into the 'Input' portion of the dialog generates immediate results. This command will change your cross section graphics – not your DTM.

Try it out!

Have a MicroStation or InRoads question? [Submit it to us](#) and you just might see your answer in next month's newsletter.

Open Enrollment - [top](#)

Open-Enrollment Classes With Seats Available.

All classes are held in Madison, WI unless otherwise noted.

InRoads - <i>Survey Basics</i>	Aug. 24-25
InRoads - <i>Delta V7 to V8</i>	Sept. 22-23
InRoads - <i>Level II</i>	Oct. 5-8
MicroStation V8 - <i>Admin Update</i>	Aug. 3-4
MicroStation V8 - <i>User Update</i>	Aug. 10-11
MicroStation V7 - <i>Fundamentals</i>	Sept. 8-10
MicroStation V8 - <i>Admin Update</i>	Sept. 13-14
MicroStation - <i>Advanced</i>	Sept. 15-17
MicroStation - <i>Accudraw</i>	Sept. 21-21
MicroStation V8 - <i>Fundamentals</i>	Oct. 13-15
MicroStation V8 - <i>User Update</i>	Oct. 19-20
MicroStation - <i>Everything 3D</i>	Oct. 26-28

Onsite Training - [top](#)

How you can benefit from onsite training

- Eliminates travel expenses.
- Option of working with your data vs. off-the shelf material.
- You can train twice as many people compared to offsite classes.
- Project work can double as training material.
- Your computers, your network, your facilities, your schedule.
- Flat rate from us, no hidden or undefined costs
- Eliminates travel expenses.

With as few as 3 or 4 students, onsite training can save you money.

- [Find out more.](#)
- [Request a quote for training customized to your needs.](#)

Our Guarantee

We want your investment in training to be a smart business decision. Therefore, any student can retake any class for any reason without incurring additional registration fees. Just that simple.

To be removed from this monthly newsletter, please reply to this message and note your wishes.

[Top](#) | [Contact us](#) | [Visit our web site](#)