

IN THIS ISSUE

1. [News](#)
2. [Events](#)
3. [MicroStation tip](#)
4. [InRoads tip](#)
5. [Open enrollment classes](#)
6. [On-site training](#)

Has your DOT gone to V8 CADD Standards?

Want to know if your DOT has their V8 standards available online?

The following states are available online: Arizona, Florida, Illinois, Indiana, Iowa, Kansas, Kentucky, Maine, Minnesota, New Hampshire, New Mexico, New York, North Carolina, South Carolina, South Dakota, Utah, Vermont, and Washington.

Spread the Word

Spread the word. Pass this newsletter on to a friend. If a friend forwarded this issue to you, [sign up for your own copy](#).

For a list of links to the individual DOT pages, please visit the [USA State CAD Standards](#) page, compiled by John Stickney.

[Click for past issues.](#)

Quick Links

- [Contact us](#)
- [Visit our web site](#)

Bentley Adds 3D PDF Generation to MicroStation

With the new visualization addition due out mid-February, MicroStation users will be able to include animated 3D models in Adobe PDF documents with the press of a button. With this advance, and for the first time from any product, users will also be able to include interactive and animated 3D models in PDF files. This will enable professionals and their clients to benefit from interactive 3D visualization. To learn more, please visit [Bentley's Interactive 3D PDF](#) page.

Legal Stuff:

We do not sell Bentley products. MicroStation and InRoads are Bentley products and trademarked as such. We only offer this information as a benefit to our subscribers.

News [top](#)

An addition to The Envision Group

Jason Van Dinter, the proprietrr of Skyline Design Drafting Service, has recently joined the Envision team. Welcome aboard!

Events [top](#)

Bentley:

- [BE Conference 2005](#) - May 8-12, 2005 - Baltimore Convention Center - Baltimore, Maryland

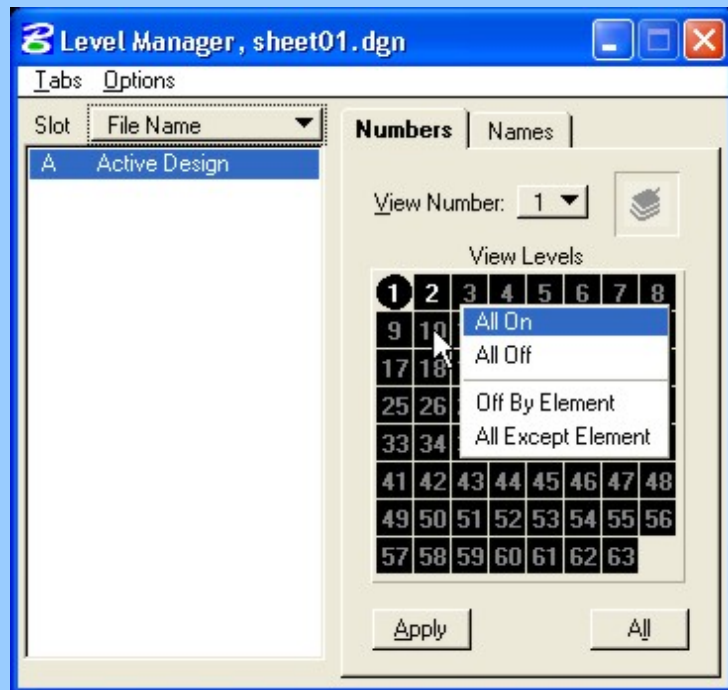
Others:

- [Nebraska User Group Spring Conference & Workshops](#) - March 22-23, 2005
Southeast Community College - Lincoln, Nebraska
- [The IDDEA Group 2005 Fall Conference](#) - October 5-7, 2005
Scheman Center on Iowa State Campus - Ames, Iowa

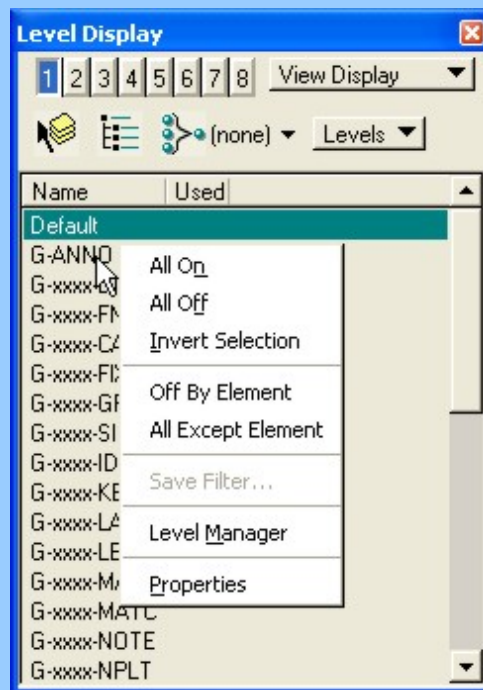
Are there TMC Meetings, Seminars, Trade shows, and Conferences you think are interesting? [Let us know](#) and we will add them to our newsletter.

There is a useful pop up menu in V7 and V8 in the Level dialogs. It will allow you to quickly turn off or on all levels. You can also select the level you want turned off by selecting an element on the screen.

In V7 open the Level Manager dialog from the pull-down menu Settings>Level>Manager. In the number map of the dialog right click to see the pop up menu. Then select one of the choices in the menu.



In V8 open the Level Display dialog from the pull-down menu Settings>Level>Display. In the level names of the dialog right click to see the pop up menu. Then select one of the choices in the menu.



[Tip Archives](#)

InRoads Data Files

Did you know InRoads is driven by a number of ASCII files? You can open these files in a text editor such as Notepad or WordPad.

Here is a list of common setup files:

- Civil.ini - InRoads Preferences **I**nitialization
- Wysiwyg.ini - InRoads Geometry Styles **I**nitialization
- Survey.fwf - FieldWorks **F**eature Table
- Survey.fxp - Fieldworks **e**Xtended Preferences
- Impexp.ini - InRoads Survey **I**mport **E**xport file
- Datacollector.tiw - InRoads Survey **T**ext **I**mport **W**izard
- Datacollector.tew - InRoads Survey **T**ext **E**xport **W**izard

Making edits with a text editor can be helpful and sometimes quicker. When editing these files with a text editor you need to be especially careful as you can make a change that is not acceptable to the program. Here is a short list of rules we have come up with.

1. Do not open a file with a text editor while it is opened in InRoads. As this will corrupt the file.
2. You should always work with a Beta version of the file and push it out to the users when you have finished making & verifying the edits.
3. Do not try to E-mail or copy the InRoads INI files while opened with InRoads. You will wind-up with a file twice the size.
4. If you want any Geometry Style, Feature Style, or Named Symbolologies with names greater than 16 characters, you will need to use a text editor. InRoads dialogs will limit you to approximately 16 characters.
5. In no case should you use more than 31 characters as this will cause truncation and/or errors.
6. Do not reference level names containing the characters <> \ / . " ? * | = ' or & as these are invalid level names.
7. Ini files are not necessary downward compatible. Do not use InRoads Version 8.2 to open an InI file developed in Version 8.4

Please let us know if you have come across something we have missed we will add it to this tip and post it to our website.

[Tip Archives](#)

Have a MicroStation or InRoads question?

[Submit](#) it to us and you just might see your answer in next months newsletter.

Open Enrollment [top](#)

Open-Enrollment Classes With Seats Available.

InRoads - Site	Mar. 14-16	Madison, WI
InRoads - Essentials	Mar. 14-18	Madison, WI
InRoads - Survey Basics	Apr. 6-7	Madison, WI
InRoads - Level II	Apr. 12-15	Madison, WI
MicroStation V8 - Advanced	Feb. 15-17	Madison, WI
MicroStation V8 - User Update	Feb. 22-23	Madison, WI
MicroStation V8 - Power User	Feb. 24-28	Madison, WI
MicroStation V8 - Fundamentals	Mar. 8-10	Madison, WI
MicroStation V8 - Admin Update	Mar. 22-23	Madison, WI
MicroStation V7 - Fundamentals	Mar. 29-31	Madison, WI
MicroStation V8 - Mastering AccuDraw	Apr. 5	Madison, WI
MicroStation V8 - 2004 Update	Apr. 19-20	Madison, WI
MicroStation V8 - Power User	Apr. 21-22	Madison, WI

Onsite Training [top](#)

How you can benefit from onsite training

- Eliminates travel expenses.
- Option of working with your data vs. "off-the shelf" material.
- You can train twice as many people compared to offsite classes.
- Project work can double as training material.
- Your computers, your network, your facilities, your schedule.
- Flat rate from us, no hidden or undefined costs

With as few as 3 or 4 students, onsite training can save you money.

- [Find out more.](#)
- [Request a quote for training customized to your needs.](#)

Our Guarantee

We want your investment in training to be a smart business decision. Therefore, any student can retake any class for any reason without incurring additional registration fees. Just that simple.

To be removed from this monthly newsletter, please reply to this message and note your wishes.

[Top](#) | [Contact us](#) | [Visit our web site](#)