

## IN THIS ISSUE

1. [News](#)
2. [Events](#)
3. [MicroStation tip](#)
4. [InRoads tip](#)
5. [Open enrollment classes](#)
6. [On-site training](#)

## Need a chuckle to bring in 2006?

Need a quick laugh? Here's a few select real-life quotes told by various workers who have encountered these from different clients throughout the years:

**Quote #1 - Client:** It's almost as if every time I call you or ask for additional work, you are charging me. **Me:** ...

**Quote #2 -** While at client's office one secretary calls me over and says "Could you look at this? I'm afraid to touch it." She points to her CRT monitor and I see some bright red stuff in one spot. I scratch it with my fingernail and it comes right off. She says "What was that?!" I say "Probably nail polish." She says: "Thank god. I thought it was one of those computer viruses!"

**Quote #3 - Client:** "You've got to fix my computer. I urgently need to print a document, but the computer won't boot properly." **Me:** "What does it say?" **Client:** "Something about an error and non-system disk." **Me:** "Look at your machine. Is there a floppy inside?" **Client:** "No, but there's a sticker saying there's an Intel inside."

## Spread the Word

Spread the word. Pass this newsletter on to a friend. If a friend forwarded this issue to you, [sign up for your own copy](#).

[Click for past issues.](#)

## Quick Links

- [Contact us](#)
- [Visit our web site](#)

## The Envision Group's Expanded Services

The Envision Group has recently expanded its services to include local CAD production assistance as a supplement to our offering of MicroStation and InRoads training and consulting, 3D visualization and animation, web design, and design of marketing materials.

Please don't hesitate to [contact us via e-mail](#) or call us if you have any projects or price quotes you would like to discuss.



## Events [top](#)

### Bentley:

- [BE Conference 2006](#) - May 21-25, 2006 - Charlotte, NC
- [BE Conference Europe 2006](#) - June 11-15, 2006 - Prague, Czech Republic

Are there TMC Meetings, Seminars, Trade shows, and Conferences you think are interesting? [Let us know](#) and we will add them to our newsletter.

## MicroStation Tip - January 2006 [top](#)

### Using Windows Explorer to Open Files & Attach References

Did you know you can quickly open files and attach references by using a drag-and-drop method via Windows Explorer?

From Windows Explorer, you can click on and drag a single file from any folder onto your MicroStation window and MicroStation will prompt you if you'd like to open the file you just selected.

What may be even more beneficial as a time saver is when the References Dialog Box is open and active, multiple files can be selected in Windows Explorer and can be click-and-dragged onto the References Dialog Box. MicroStation will then go through each file individually and ask you your preferred attachment method. This can be quite handy when attaching multiple references at one time.

[Tip Archives](#)

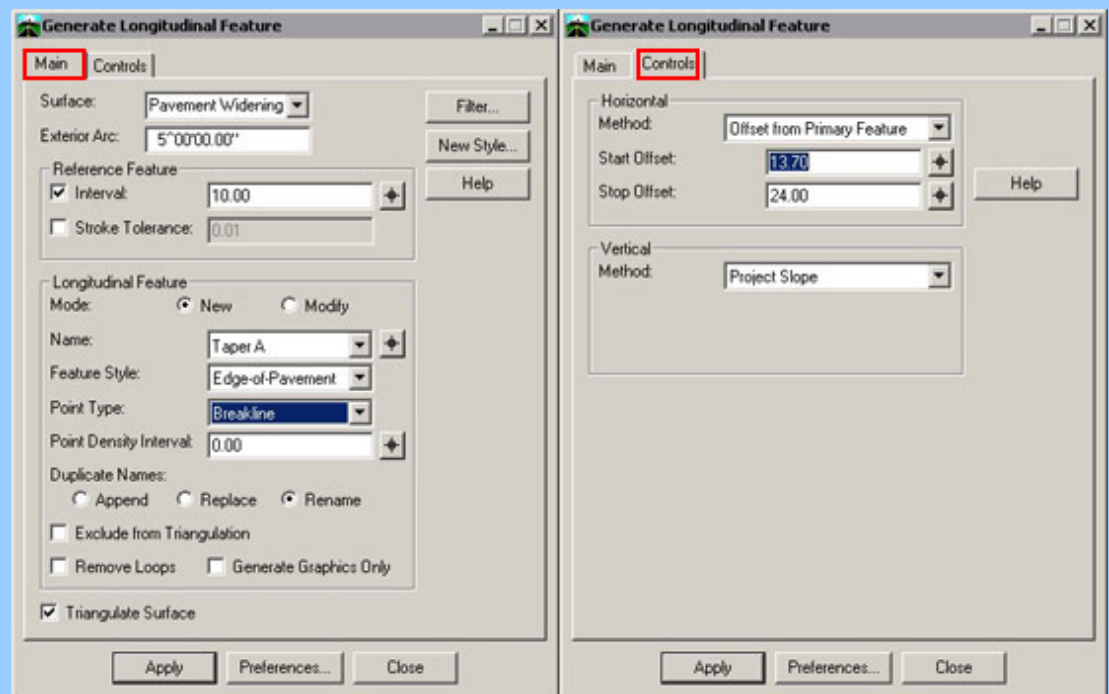
## Pavement Widening

Ever have a project that requires pavement widening?  
The challenge is maintaining (projecting) the existing pavement cross slope to the desired width.

Investigate using the **Surface > Design Surface > Generate Longitudinal Feature** command. This command can be used to compute and project cross slopes between either DTM features or 3D MicroStation elements.

This screen-shot from MicroStation shows the results of executing this command two separate times. The feature labeled **Taper A** was created using the settings shown in the screen-shots of the Generate Longitudinal Feature dialog(s). The feature labeled **Widening B** was created with a second execution of the command with both the start and stop Horizontal offsets to 24 feet.

With the **Vertical Method** set to **Project Slope**, you will be prompted to select the two features that define the desired cross slope projection (points 1 & 2) followed by the limits of the feature to create (point 3).



Experiment with this command and think of other design situations where it might apply!

[Tip Archives](#)

Have a MicroStation or InRoads question?

[Submit](#) it to us and you just might see your answer in next months newsletter.

## Open-Enrollment Classes With Seats Available.

InRoads - Essentials	Jan. 9-13	Madison, WI
InRoads - Survey	Jan. 26-27	Madison, WI
InRoads - Site	Mar. 29-31	Madison, WI
MicroStation V8 - Everything 3D	Jan. 18-20	Madison, WI
MicroStation V8 - Advanced	Feb. 8-10	Madison, WI
MicroStation V8 - CAD Manager Update	Feb. 23-24	Madison, WI
MicroStation V8 - User Update	Mar. 14-15	Madison, WI
MicroStation V8 - Power User	Mar. 15-16	Madison, WI
MicroStation V8 - Fundamentals	Mar. 21-24	Madison, WI

[Details](#) | [Schedule](#) | [Register](#)

## Onsite Training [top](#)

### How you can benefit from onsite training

- Eliminates travel expenses.
- Option of working with your data vs. "off-the shelf" material.
- You can train twice as many people compared to offsite classes.
- Project work can double as training material.
- Your computers, your network, your facilities, your schedule.
- Flat rate from us, no hidden or undefined costs

### With as few as 3 or 4 students, onsite training can save you money.

- [Find out more.](#)
- [Request a quote for training customized to your needs.](#)

### Our Guarantee

We want your investment in training to be a smart business decision. Therefore, any student can retake any class for any reason without incurring additional registration fees. Just that simple.

To be removed from this monthly newsletter, please reply to this message and note your wishes.

[Top](#) | [Contact us](#) | [Visit our web site](#)