



## News

### We're moving offices

Beginning July 1st, the Envision Group will be moving our offices to a larger suite to help with our growth in size. Our street address will not be changing, however the Suite number will be changed from Suite 205 to Suite 102. Below you will find our full mailing address so update your records for the beginning of July.

The Envision Group 8517 Excelsior Drive, Suite 102 Madison, WI 53717

#### Legal Stuff:

We do not sell Bentley products. MicroStation and InRoads are Bentley products and trademarked as such. We only offer this information as a benefit to our subscribers.

## IN THIS ISSUE

1. [News](#)
2. [Events](#)
3. [MicroStation tip](#)
4. [InRoads tip](#)
5. [Open enrollment classes](#)
6. [On-site training](#)

## SPREAD THE WORD

Spread the word. Pass this newsletter on to a friend. If a friend forwarded this issue to you, sign up for your own copy.

## Events

[<< back to top](#)

### Bentley:

- [BE Conference Europe 2007](#) - Jun 10-14, 2007  
Hilton London Metropole - London, United Kingdom
- [Mid-Continent MicroStation Community 2007 Summer Conference](#) - Aug 15-16, 2007  
Overland Park Convention Center - Overland Park, Kansas
- [The IDDEA Group 2007 Fall Conference](#) - Oct 3-5, 2007  
Scheman Center on Iowa State Campus - Ames, Iowa
- [BCUKI Winter Conference 2008](#) - Feb 28-29, 2008  
Sheraton Heathrow Hotel - London, UK

Are there TMC Meetings, Seminars, Trade shows, and Conferences you think are interesting? [Let us know](#) and we will add them to our newsletter.

## QUICK LINKS

- [Click for past issues.](#)



## MicroStation Tip

[<< back to top](#)

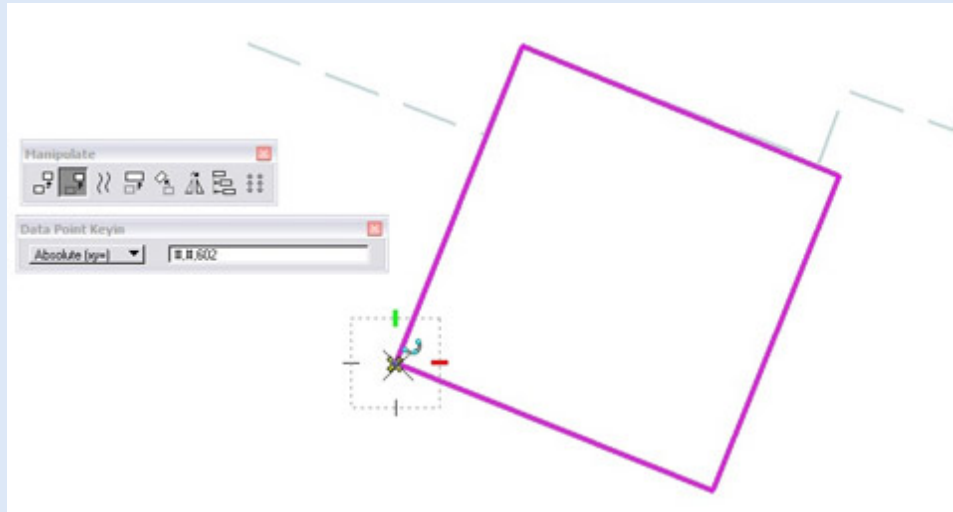
### Moving Elements to Elevation

New to MicroStation 8.5 2004 Edition is the ability to use relative values with a "#". When using the XY= key-in you can type # and the value will not change. What this means is that now you can change the elevation of an element to an absolute value while keeping its XY location the same.

In this example we need to move the building pad to elevation 602. Currently the building pad is at 2,147,483.6480

1. Select the Move command.
2. Tentative or AccuSnap to the corner and accept.
3. With focus with AccuDraw use the shortcut key-in "**M**" (place multiple points). The Data Point Key-in dialog will appear.
4. From the drop down list select "**Absolute (xy=)**"
5. Key-in the field: **#,#,602** This will keep the building pad at the same xy coordinate but move it to the elevation 602.

6. Hit the enter key on the keyboard to accept. Snap into the corner to verify the elevation is 602.



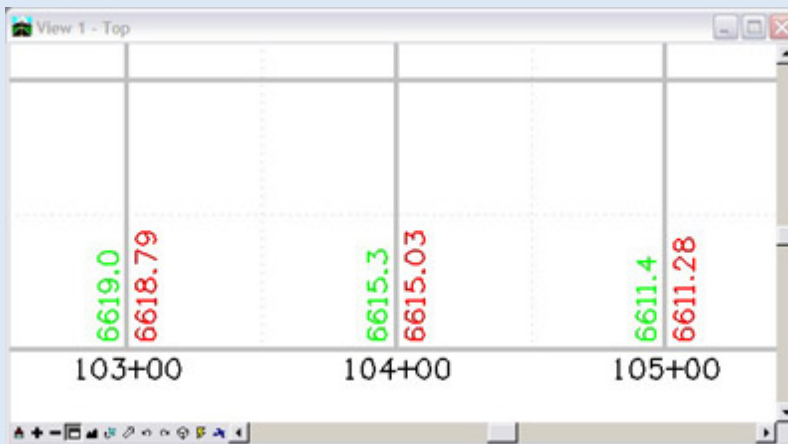
[ [Tip Archives](#) ]

## InRoads Tip

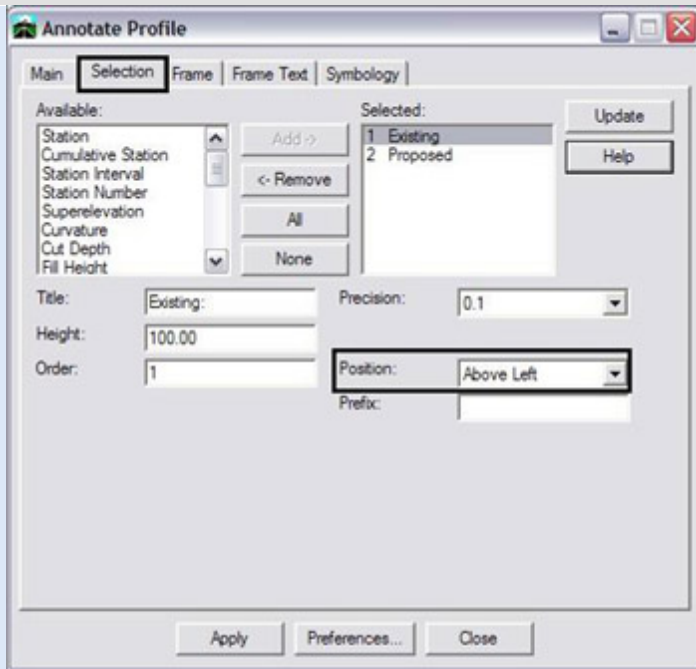
<< back to top

### Annotating Profiles

Were you aware that 19 different design parameters can be annotated on profile sets? A common use is to place existing and proposed elevations along the bottom axis.



**Select Evaluation > Profile > Annotate Profile** from the InRoads menu. On the Selection tab, a list of all available elements is shown. Identify items in the Selected portion of the dialog to define settings for precision, prefix, or position.



[ [Tip Archives](#) ]

## Open Enrollment Classes

<< back to top

### Open-Enrollment Classes With Seats Available.

<a href="#">MicroStation V8 - User Upgrade</a>	Jul. 10-11	Madison, WI
<a href="#">MicroStation V8 - Power User</a>	Jul. 12-13	Madison, WI
<a href="#">MicroStation V8 - AccuDraw</a>	Aug. 17	Madison, WI
<a href="#">MicroStation V7 (J) - Fundamentals</a>	Aug. 21-24	Madison, WI
<a href="#">InRoads - Survey</a>	Jul 19-20	Madison, WI
<a href="#">InRoads - Fundamentals</a>	Aug. 6-10	Madison, WI

---

To be removed from this monthly newsletter, please reply to this message and note your wishes.

[Top](#) | [Contact us](#) | [Visit our web site](#)