


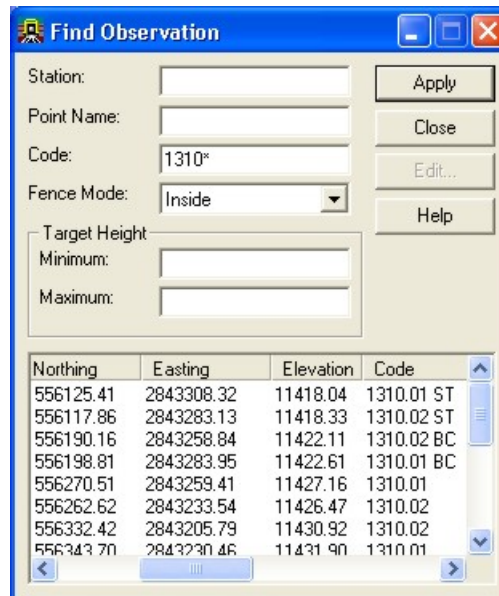


InRoads Survey

Find Fieldbook points inside a fence

Finding points in a Survey Fieldbook can be made easier using the Find Observation dialog. In addition to Station, Point Name, Code, and Target Height using a Fence can help constrain a lookup area. After placing a fence in the design file, the Fence Mode drop-down will activate allowing you to select Inside, Outside, or Ignore modes.

1. Click the **Fieldbook**  icon from the Survey toolbar. The Survey Fieldbook will appear.
2. **Right Click** any **Point Name** in the observation section of the dialog. From the shortcut menu Select **Find** the **Find Observation** dialog will appear.



3. Place a MicroStation Fence around the area you want to constrain.
4. Key-in any combination of **Point Name**, **Code**, **Target Height**
5. Select **Fence Mode: Inside**



The Envision Group, Inc.

MicroStation & InRoads | EDUCATION•CONSULTING•SUPPORT•VISUALIZATION

8517 Excelsior Drive, Suite 102
Madison, WI 53717-1995
608.836.3903 Phone
608.662.9043 Fax

6. <D> the **Apply** icon. As in the sample above, points that lay inside the fence and use code 1310 will display in the list.

To learn more about the Find Observation dialog select the Help icon.

[Robert Mecham](#) is a partner with the firm [The Envision Group](#) in Madison, WI. The firm specializes in MicroStation and the InRoads Suite of products. In addition to providing training for MicroStation & InRoads, they offer visualization services and consulting for clients throughout the United States.