

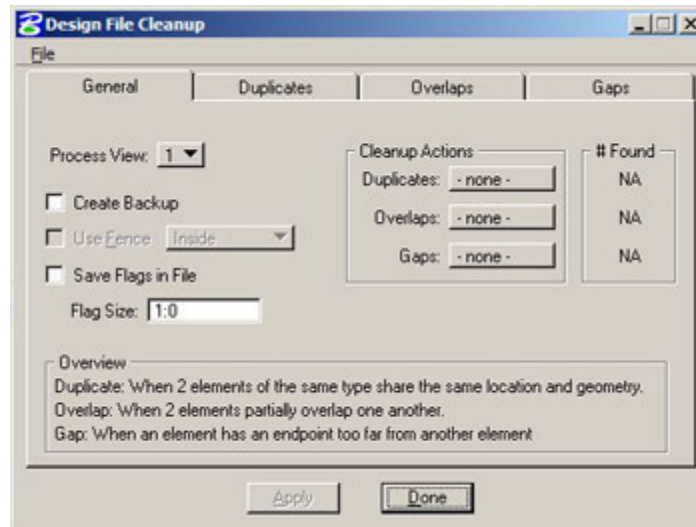


## The Envision Group, Inc.

MicroStation & InRoads | EDUCATION•CONSULTING•SUPPORT•VISUALIZATION

8517 Excelsior Drive, Suite 205  
Madison, WI 53717-1995  
608.836.3903 Phone  
608.662.9043 Fax

### Data Cleanup Utility



This utility is used to clean up unneeded elements from your design file, including overlapped geometry of same type, duplicate geometry, and geometry that contains gaps.

Note: Prior to executing this utility, be sure to create a backup of your design file. The selection box 'Create Backup' seems to cause the utility to not function properly.



## The Envision Group, Inc.

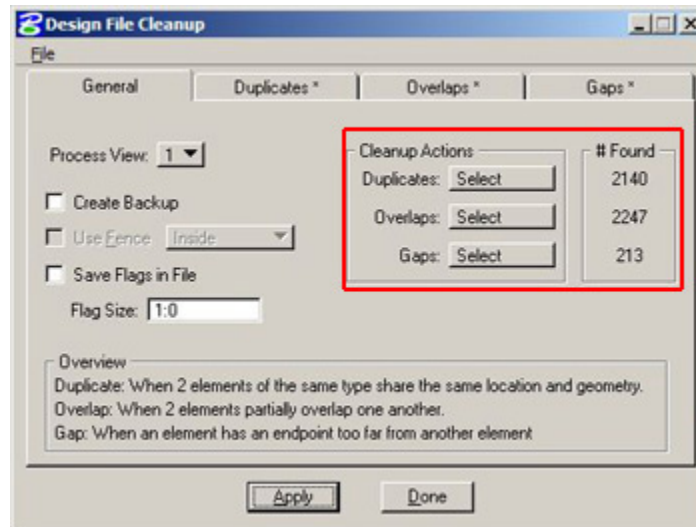
MicroStation & InRoads | EDUCATION•CONSULTING•SUPPORT•VISUALIZATION

8517 Excelsior Drive, Suite 205  
Madison, WI 53717-1995  
608.836.3903 Phone  
608.662.9043 Fax

Open the Data Cleanup Utility from the pulldown menu

### Utilities > Data Cleanup

1. Select your View that you would like to clean up.
2. Each tab of the utility contains specific parameters. Update these settings to your liking. Once finished, go back to the General tab.
3. Under the Cleanup Actions box, pick Select under each desired cleanup action and click Apply. This will calculate and report to you the number of elements that will be affected by the utility and it's settings.
4. Once you have the elements selected, choose Delete under the Cleanup Actions box and click 'Apply' to clean up the selected elements.



[Robert Mecham](#) is a partner with the firm [The Envision Group](#) in Madison, WI. The firm specializes in MicroStation and the InRoads Suite of products. In addition to providing training for MicroStation & InRoads, they offer visualization services and consulting for clients throughout the United States.