



The Envision Group, Inc.

MicroStation & InRoads | EDUCATION•CONSULTING•SUPPORT•VISUALIZATION

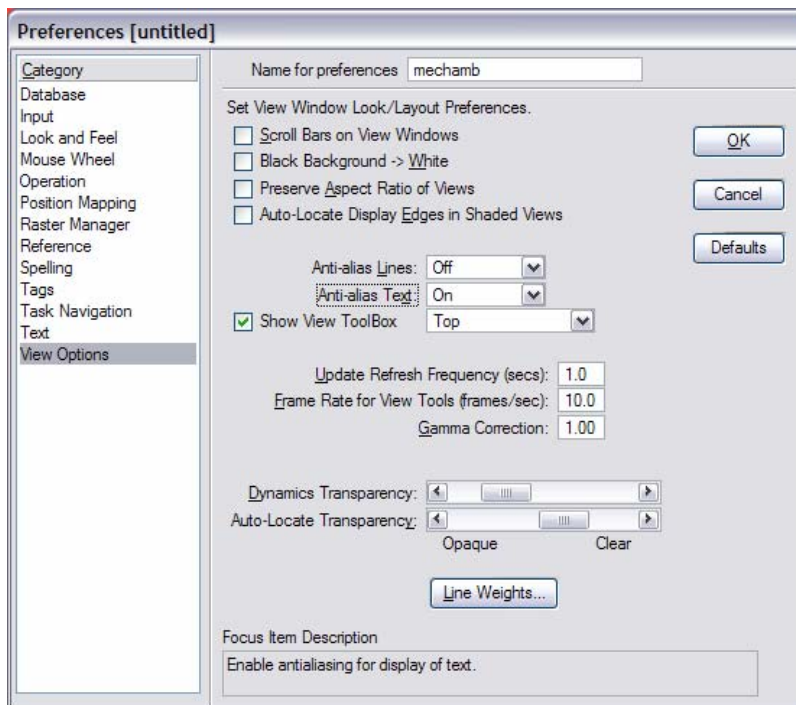
8517 Excelsior Drive, Suite 102
Madison, WI 53717-1995
608.836.3903 Phone
608.662.9043 Fax

View Preferences

The display of MicroStation graphics is more dependent on the computer video card than in the past. The graphics engine is also utilizing Microsoft DirectX 9 to make graphics smoother in 2d and 3d designs.

The comment users typically have is that the text and lines look fuzzy. That is the anti-alias setting in the Workspace Preferences dialog. Turning off the anti-alias setting will have the elements look as they did in previous versions of MicroStation.

Workspaces Preferences - View Options



Anti-Alias Text and Line – changes the display of these graphics from jagged edges to smooth.

Auto-Locate Display Edges in Shaded Views – when selecting a surface or solid in a shaded view the edges along with the surface will be displayed.

Auto-Locate Transparency – when elements are identified using the element selection tool, the highlight color transparency is applied.

Dynamics Transparency – when elements with a fill are placed or modified in the design file, the fill becomes transparent.



The Envision Group, Inc.

MicroStation & InRoads | EDUCATION•CONSULTING•SUPPORT•VISUALIZATION

8517 Excelsior Drive, Suite 102
Madison, WI 53717-1995
608.836.3903 Phone
608.662.9043 Fax

[Robert Mecham](#) is a partner with the firm [The Envision Group](#) in Madison, WI. The firm specializes in MicroStation and the InRoads Suite of products. In addition to providing training for MicroStation & InRoads, they offer visualization services and consulting for clients throughout the United States.